

How to Purchase an Animal

First and foremost, THANK YOU! The generous support of the buyers is what makes this event possible!

Options for Purchase

When you purchase an animal at the Plumas-Sierra Junior Livestock Auction, you have three options:

Live Release: Take the animal home with you alive to process yourself, keep as a pet, etc.

Have the animal processed for meat: Meat will be delivered to Quincy for pickup approximately one month after the sale.

- Beef - \$150 plus \$1.30/lb
- Hog - \$80 plus \$1.20/lb
- Lamb - \$60 plus \$1.10/lb
- Goat - \$60 plus \$1.10/lb

Resale: You can choose to resell the animal for market price, listed below. You will then pay the difference between your bid price and the resale price.

- Beef - \$1.00/lb
- Swine- \$0.80/lb
- Lamb - \$1.50/lb
- Goat - \$2.20/lb

Donate the animal: You can choose to donate the animal to a cause of your choice and the animal will go back through the sale. It's selling price will be donated to that cause.

Absentee Bidding

Can't make the sale in person? Absentee Bidding, Phone Bidding and Add-Ons will be accepted for those who cannot attend the sale! These forms must be submitted by July 29.

Forms can be mailed to:

PSJLA
PO Box 1060
Loyalton, CA 96118

Or emailed to: powers@gotsky.com

Sale Schedule

July 31, 2022

- Buyer Registration - 7:30 to 9:00 a.m.
- Continental breakfast - 7:30 to 8:45 a.m.
- Junior Livestock Auction - 9:00 a.m.
- Buyers' lunch hosted by Plumas Co. Sheriff's Assoc. - noon

**Plumas County Fairgrounds
Quincy, California**

Visit plumas-sierrajla.com for sale forms and additional information.

PLUMAS-SIERRA COUNTY FAIR JUNIOR LIVESTOCK SALE



BUYERS'S GUIDE



About Junior Livestock Projects

The youth showing and selling at the Plumas-Sierra County Fair include members of 4-H, FFA and independents in Plumas and Sierra Counties and the surrounding communities. Members are required to own their animals for a minimum of 60 (lambs, goats, swine and turkeys) or 120 (beef) days. Most have their animals much longer. During this time children feed, exercise and train their animals. They learn the importance of producing safe, nutritious, high quality meat for the buyer of their animals.

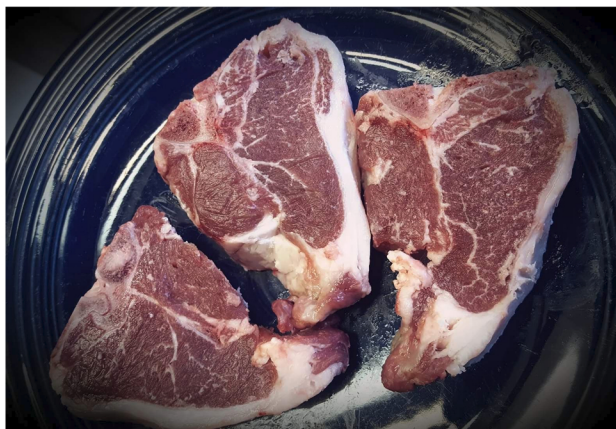
Not only have members spent months raising and training their animals, they have also been involved in community service, gained experience in public speaking, learned how to keep records and manage money, and gained invaluable leadership skills, all of which will make them the leaders of tomorrow. These youth are the future -- Our Future.

Purchase of an animal in a Junior Livestock Auction may be viewed as a healthful addition to your nutrition, a financial donation to a young entrepreneur and as an investment in the future of American Agriculture and food production. However you choose to view your purchase, it will make a dynamic contribution toward the growth of individuals and our society!



How much Meat Will I Get?

How much meat you get from the animal you purchase will depend 1) on the degree of muscling and fatness of the animal and 2) on how you choose to have your meat cut. Leaner, heavier muscled animals have less waste as discarded fat. Choosing boneless cuts will result in less weight of the finished product than choosing bone-in cuts. Below are averages based on standard processing with a mix of bone-in and boneless cuts.



Species:	Example:
Beef – average yield of 40%	A 1200 lb. steer will produce about 490 lbs. of meat cuts
Swine – average yield of 53%	A 250 lb. pig will produce about 133 lbs. of meat cuts
Lamb – average yield of 40%	A 120 lb. lamb will produce about 48 lbs. of meat cuts
Goat – average yield of 27%	An 80 lb. goat will produce about 21 lbs. of meat cuts
Turkey – average yield of 80%	A 27 lb. turkey will dress at about 21 lbs.

Benefits to the Buyer

- Your purchase brings high quality food to your table. Know your farmer, know your food!
- Animals are locally grown, humanely raised by youth who are trained in Quality Assurance, providing the BEST product for the consumer.
- Tax advantages. Any amount over market price is a tax deductible donation.
- Satisfaction that you are supporting local youth in a wholesome, educational program.

Benefits to Youth Exhibitor

- Your purchase supports these goal-oriented youngsters and allows investment in future ...projects and their future in agriculture or whatever industry they choose to pursue.
- Youth receive practical training in business, time management, record keeping, responsibility and more.
- Exhibitors develop skills in public speaking, interacting with other youth and adults as well as assisting younger members in their project development.
- 4-H and FFA allow opportunities to participate in not only local, but state, regional and national events, exposing participants to new geographical areas, people and experiences.